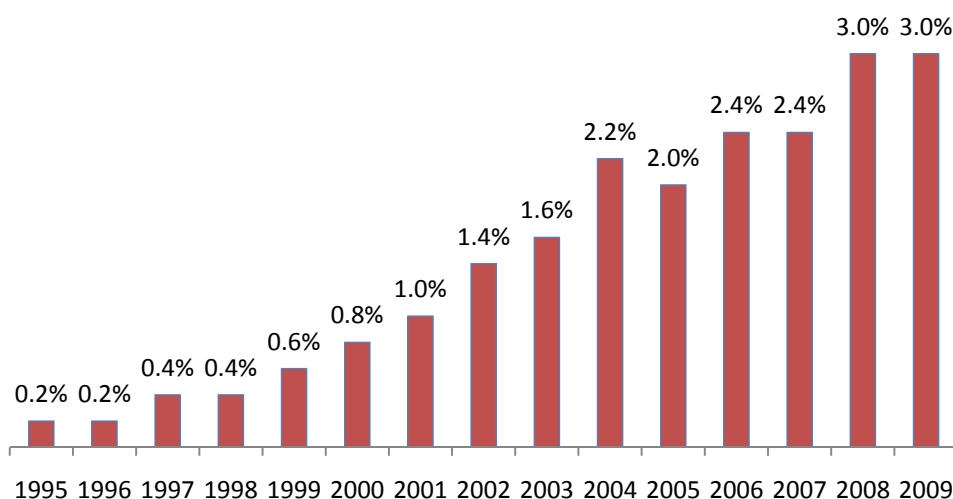
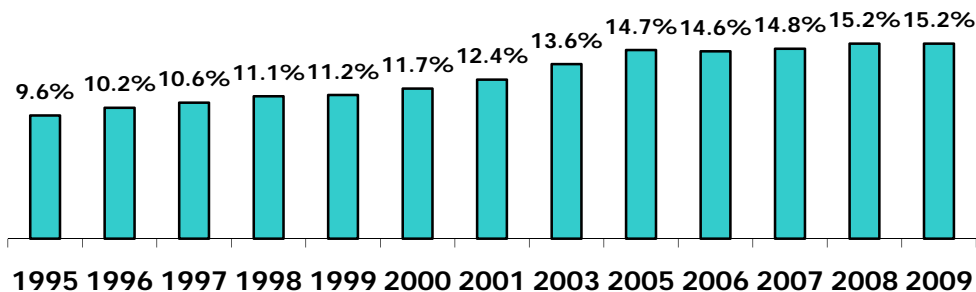


Women in U.S. Management

Percent of Women CEOs* of the *Fortune* 500¹

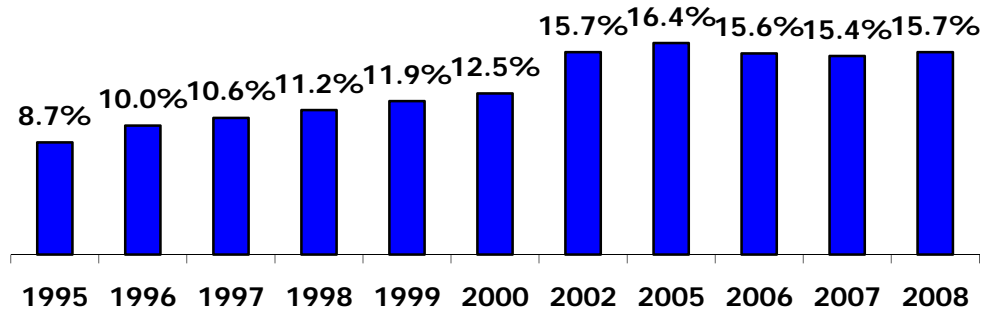


Fortune 500 Board Seats Held by Women²

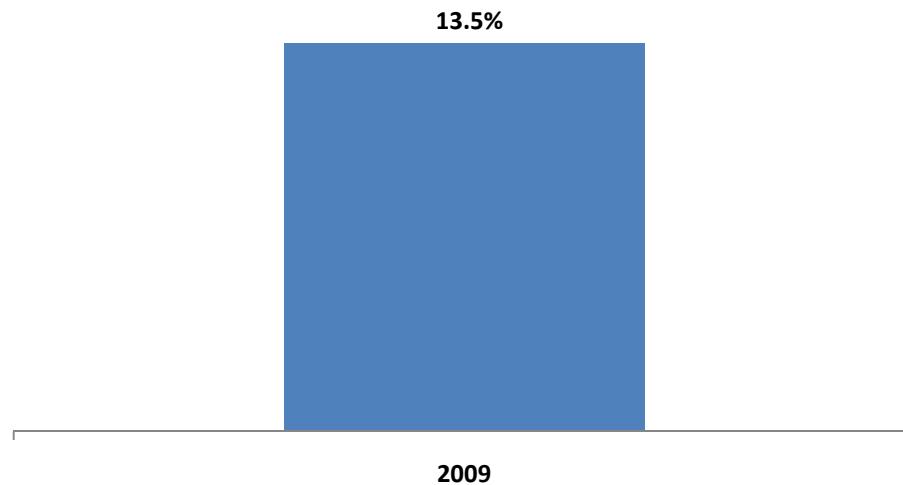


Women in U.S. Management

Fortune 500 Corporate Officer Positions Held by Women³



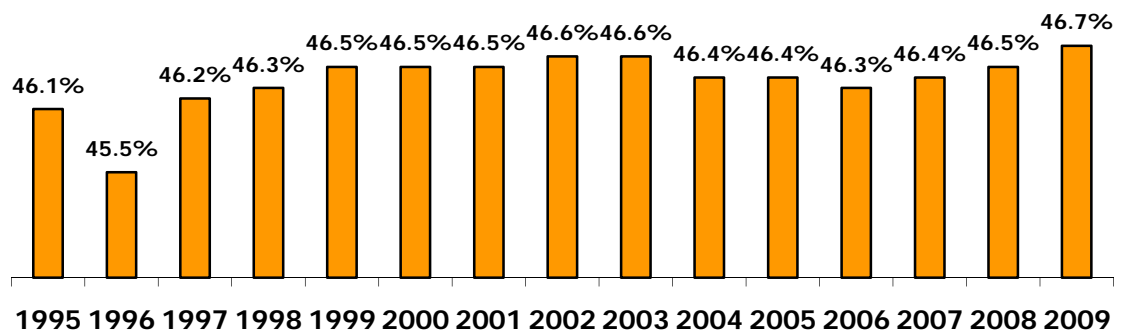
Fortune 500 Executive Officer† Positions Held by Women⁴



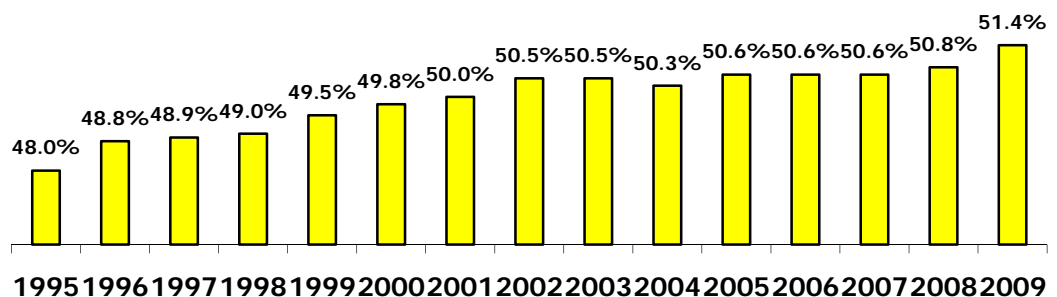
Women in U.S. Management

QUICK TAKES

Women's Share of the U.S. Labor Force⁵



% of Managerial, Professional & Related Positions in the U.S. Labor Force Held by Women⁶



*Note: For the list of current women CEOs of the Fortune 500 and Fortune 1000, please see our list of Women CEOs of the Fortune 1000. <http://catalyst.org/publication/322/women-ceos-of-the-fortune-1000>

†Note: In 2009, Catalyst instituted a methodology change that makes comparison to previous annual Corporate Officer statistics inappropriate.

SOURCES

1. Catalyst, unpublished research (2009). This list measures the number of women CEOs as of the time when Fortune publishes their annual Fortune 500 list.
2. Rachel Soares, Nancy M. Carter, and Jan Combopiano, *2009 Catalyst Census: Fortune 500 Women Board Directors* (Catalyst: 2009); Catalyst, *2008 Catalyst Census of Women Board Directors of the Fortune 500* (2009); Catalyst, *2007 Catalyst Census of Women Board Directors of the Fortune 500* (2007); Catalyst, *2005 Catalyst Census of Women Board Directors of the Fortune 500* (2006).
3. Catalyst, *2008 Catalyst Census of Women Corporate Officers and Top Earners of the Fortune 500* (2008); Catalyst, *2007 Census of Women Corporate Officers and Top Earners of the Fortune 500*



Women in U.S. Management

QUICK TAKES

- (2007); Catalyst, *2005 Catalyst Census of Women Corporate Officers and Top Earners of the Fortune 500* (2006).
4. Rachel Soares, Nancy M. Carter, and Jan Combopiano, *2009 Census: Fortune 500 Women Executives* (Catalyst: 2009).
 5. Current Population Survey, Bureau of Labor Statistics, "Table 2: Employment status of the civilian noninstitutional population 16 years and over by sex, 1973 to date," *Annual Averages 2009* (2010). <http://www.bls.gov/cps/cpsaat2.pdf>
 6. Current Population Survey, Bureau of Labor Statistics, "Table 11: Employed persons by detailed occupation, sex, race, and Hispanic or Latino ethnicity," *Annual Averages 2009* (2010). <http://www.bls.gov/cps/cpsaat11.pdf>

UPDATED March 16, 2010